

**550w~570w**

**M10 solar modules** Aquaman series  
Mono SMBB TOPCon large size half cut  
**full black module**

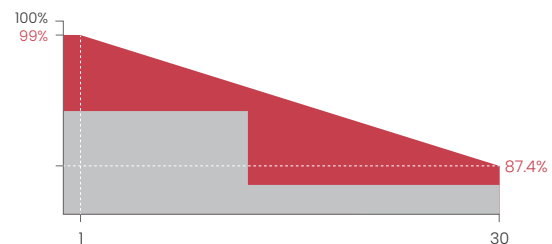
Excellent technical advantages and system design scheme to achieve high reliability, power generation effective gain and EPC cost reduction. Products can match different installation conditions, taking into account high adaptability and high compatibility.


**MODULE CHARACTER**


-  PID Resistance
-  Salt mist resistance/Ammonia resistance /dust and hail resistance
-  Production process reliability test
-  0~+5W Positive Tolerance
-  Lower LID / LETID
-  Aesthetic appearance design
-  Reduce BOS cost increase ROI
-  Non-destructive cutting

**CERTIFICATION**

IEC61215/IEC61730  
ISO9001:Quality Management System  
ISO14001:Environmental Management System  
ISO45001:Occupational Health and Safety Management System



 30 YEAR Linear performance warranty

 12 YEAR Product warranty



Module Type	SR-72M550NHLPro		SR-72M555NHLPro		SR-72M560NHLPro		SR-72M565NHLPro		SR-72M570NHLPro	
Module Efficiency (%)	21.31		21.51		21.7		21.9		22.09	
Tolerance (W)	0 ~ +5		0 ~ +5		0 ~ +5		0 ~ +5		0 ~ +5	
Test Environment	STC	NOCT	STC	NOCT	STC	NOCT	STC	NOCT	STC	NOCT
Maximum Power Pmax(W)	550	414.91	555	418.7	560	422.5	565	426.2	570	430.0
Open Circuit Voltage Voc(V)	50.14	47.90	50.34	48.08	50.53	48.27	50.73	48.45	50.92	48.64
Short Circuit Current Isc(A)	14.03	11.32	14.10	11.38	14.17	11.44	14.25	11.50	14.31	11.55
Maximum Power Voltage Vm(V)	41.43	38.88	41.59	39.03	41.75	39.18	41.91	39.33	42.07	39.48
Maximum Power Current Im(A)	13.28	10.71	13.35	10.77	13.42	10.82	13.49	10.88	13.55	10.93
Cell Type (mm)	M10 TOPCon									
Number of Cells (Pcs)	144(6×24)									
Maximum System Voltage (V)	DC1500									
Temp.Coeff.of Voc (%/°C)	-0.249									
Temp.Coeff.of Isc (%/°C)	0.045									
Temp.Coeff.of Pm (%/°C)	-0.3									
Operating Temperature (°C)	-40 to 85									
Nominal Operating Cell Temperature(NOCT) (°C)	45±2									
Max.Series Fuse (A)	25									
Pressure Bearing (Pa)	5400									
Wind Bearing (Pa)	2400									

STC: Irradiance 1000W/m<sup>2</sup>, Cell temperature 25°C, AM1.5  
 NOCT: Irradiance 800W/m<sup>2</sup>, Ambient temperature 20°C, Wind speed 1m/s

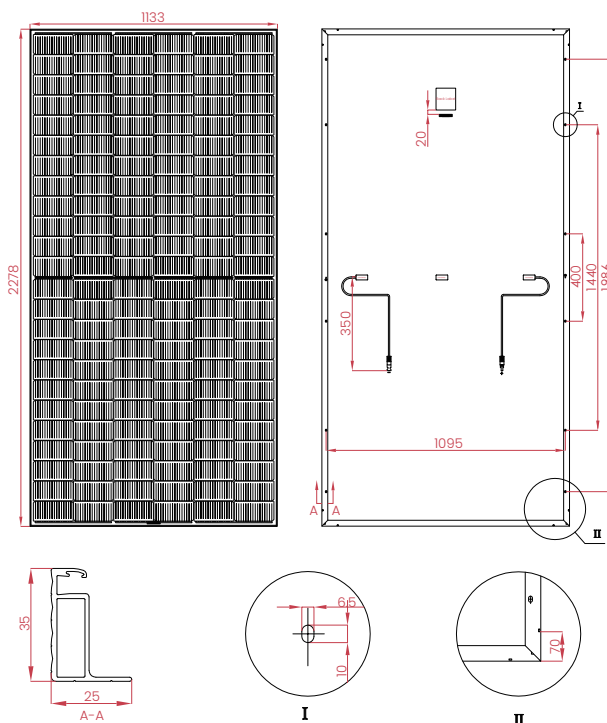
### MATERIAL DETAILS

Frame	Anodized aluminum	Net length of Cable	350mm or as customer's requirements
Cell	6×24pcs mono solar cell	Junction Box	IP≥68, TÜV & UL
Diode quantity	3	Cable&Connector	4mm <sup>2</sup> , EVO2 or EVO2 compatible
Glass	3.2mm Anti-Reflection Coating Heat Strengthened Glass		

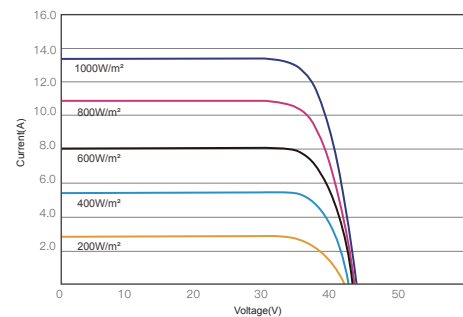
### PACKING DETAILS

Dimension	2278×1133×35mm	Weight	28kg
Loading Capacity	620pcs/40HC	Packing	31pcs/pallet

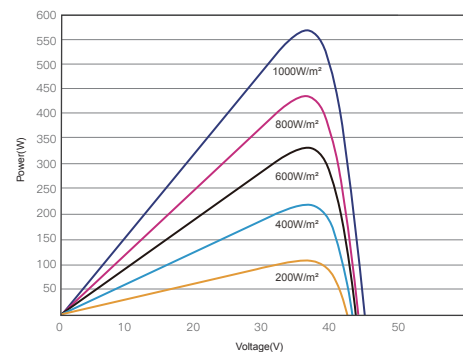
### ENGINEERING DRAWINGS



### IV CURVES



I-V CURVES OF PV MODULE(560W)



P-V CURVES OF PV MODULE(560W)